

## Celorico da Beira

(Guarda)

Tarifário Familiar



Ranking Nacional

203<sup>o</sup>

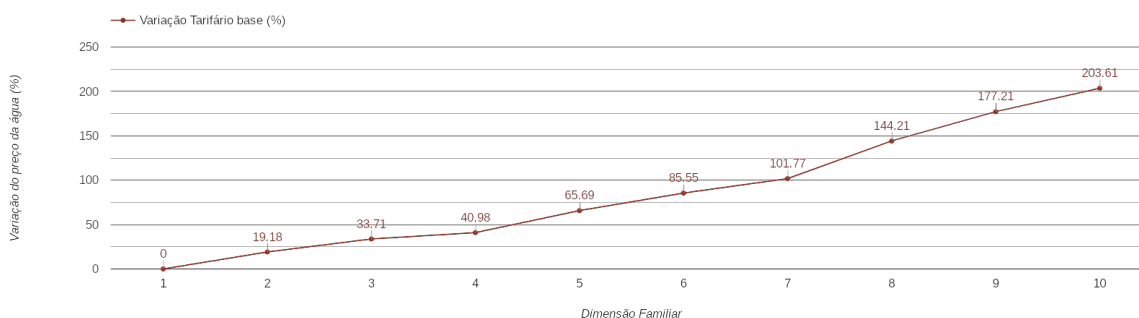
Ranking Distrital

10<sup>o</sup>

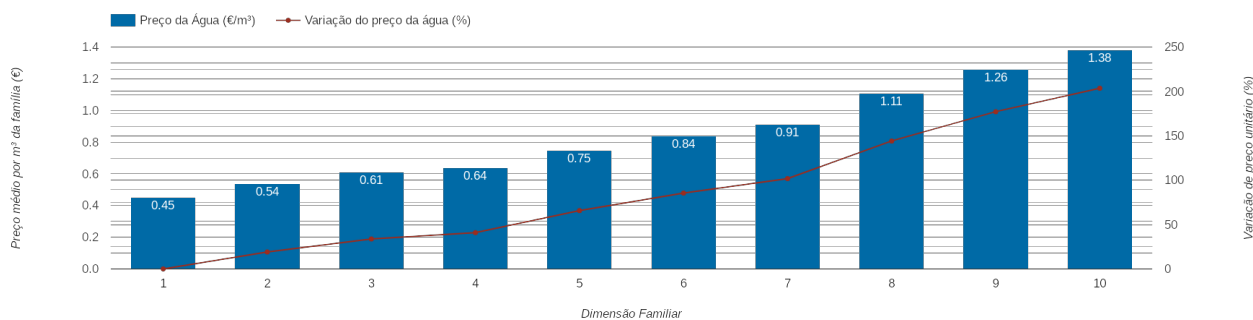
### RANKING DISTRITAL EM FUNÇÃO DO PREÇO TOTAL

Índice Equidade	1 Elemento	2 Elementos	3 Elementos	4 Elementos	5 Elementos	6 Elementos	7 Elementos	8 Elementos	9 Elementos	10 Elementos
-175.73	6 <sup>o</sup>	5 <sup>o</sup>	5 <sup>o</sup>	5 <sup>o</sup>	6 <sup>o</sup>	7 <sup>o</sup>	7 <sup>o</sup>	11 <sup>o</sup>	12 <sup>o</sup>	12 <sup>o</sup>

### PREÇO DA ÁGUA EM FUNÇÃO DA DIMENSÃO FAMILIAR



### PREÇO DA ÁGUA EM FUNÇÃO DA DIMENSÃO FAMILIAR



		TARIFÁRIO BASE (Tarifário Geral) (sem tarifa fixa)				TARIFÁRIO FINAL (Tarifário Geral & Familiar) (sem tarifa fixa)			
Dimensão Familiar	Tarifa Fixa	Consumo per capita	Custo Total	Preço por m <sup>3</sup>	Preço por pessoa	Consumo per capita	Custo Total	Preço por m <sup>3</sup>	Preço por pessoa
1	2.11 €	3.6 m <sup>3</sup>	1.63 €	0.45 €	1.63 €	---	---	---	---
2	2.11 €	3.6 m <sup>3</sup>	3.89 €	0.54 €	1.94 €	---	---	---	---
3	2.11 €	3.6 m <sup>3</sup>	6.54 €	0.61 €	2.18 €	---	---	---	---
4	2.11 €	3.6 m <sup>3</sup>	9.2 €	0.64 €	2.3 €	---	---	---	---
5	2.11 €	3.6 m <sup>3</sup>	13.52 €	0.75 €	2.7 €	---	---	---	---
6	2.11 €	3.6 m <sup>3</sup>	18.16 €	0.84 €	3.03 €	---	---	---	---
7	2.11 €	3.6 m <sup>3</sup>	23.04 €	0.91 €	3.29 €	---	---	---	---
8	2.11 €	3.6 m <sup>3</sup>	31.87 €	1.11 €	3.98 €	---	---	---	---
9	2.11 €	3.6 m <sup>3</sup>	40.7 €	1.26 €	4.52 €	---	---	---	---
10	2.11 €	3.6 m <sup>3</sup>	49.53 €	1.38 €	4.95 €	---	---	---	---