

## Sousel

(Portalegre)

Tarifário Familiar



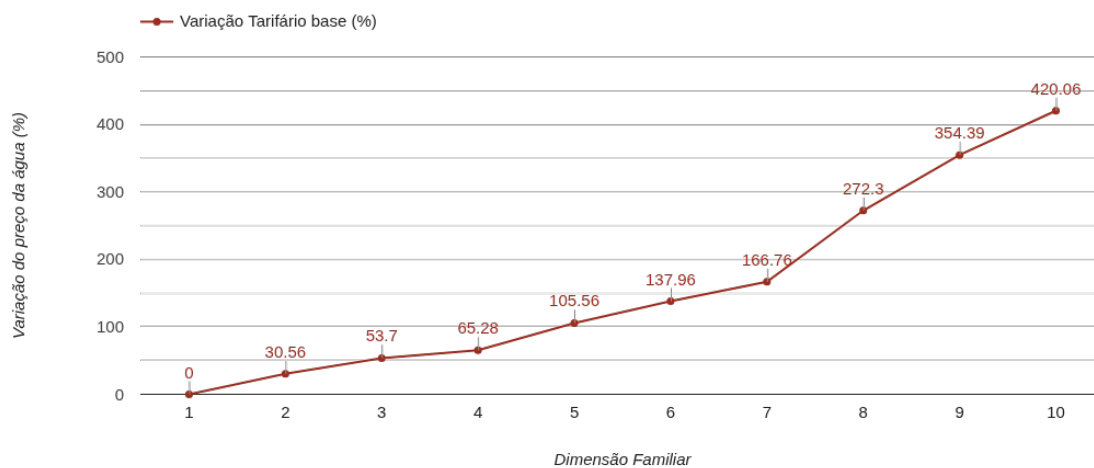
Ranking Nacional  
279<sup>o</sup>

Ranking Distrital  
13<sup>o</sup>

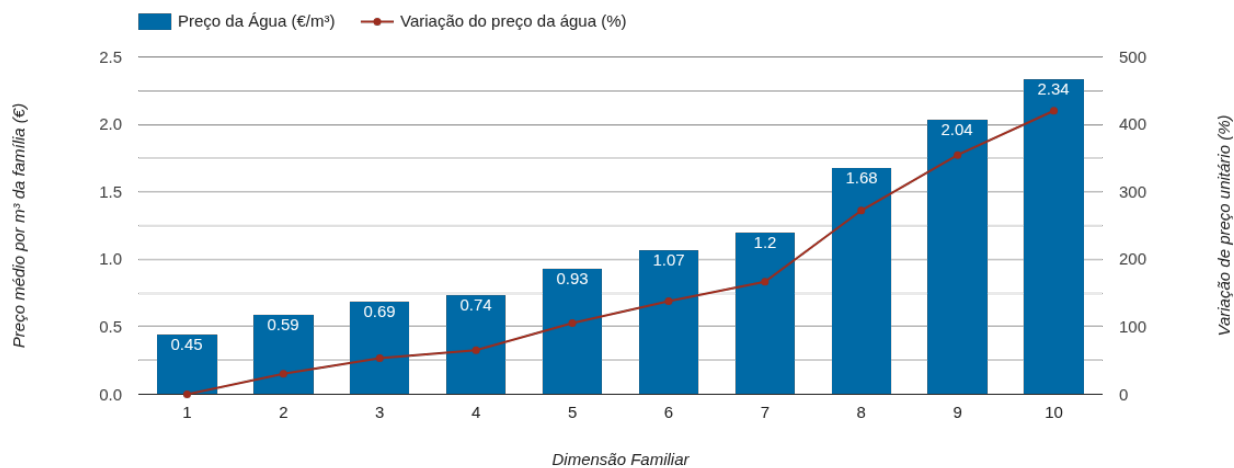
### RANKING DISTRITAL EM FUNÇÃO DO PREÇO TOTAL

Índice Equidade	1 Elemento	2 Elementos	3 Elementos	4 Elementos	5 Elementos	6 Elementos	7 Elementos	8 Elementos	9 Elementos	10 Elementos
-265.36	6 <sup>o</sup>	5 <sup>o</sup>	6 <sup>o</sup>	5 <sup>o</sup>	6 <sup>o</sup>	9 <sup>o</sup>	10 <sup>o</sup>	13 <sup>o</sup>	14 <sup>o</sup>	14 <sup>o</sup>

### PREÇO DA ÁGUA EM FUNÇÃO DA DIMENSÃO FAMILIAR



## PREÇO DA ÁGUA EM FUNÇÃO DA DIMENSÃO FAMILIAR



Dimensão Familiar	Tarifa Fixa	TARIFÁRIO BASE (Tarifário Geral) (sem tarifa fixa)				TARIFÁRIO FINAL (Tarifário Geral & Familiar) (sem tarifa fixa)			
		Consumo per capita	Custo Total	Preço por m³	Preço por pessoa	Consumo per capita	Custo Total	Preço por m³	Preço por pessoa
1	1.6 €	3.6 m³	1.62 €	0.45 €	1.62 €	---	---	---	---
2	1.6 €	3.6 m³	4.23 €	0.59 €	2.12 €	---	---	---	---
3	1.6 €	3.6 m³	7.47 €	0.69 €	2.49 €	---	---	---	---
4	1.6 €	3.6 m³	10.71 €	0.74 €	2.68 €	---	---	---	---
5	1.6 €	3.6 m³	16.65 €	0.93 €	3.33 €	---	---	---	---
6	1.6 €	3.6 m³	23.13 €	1.07 €	3.85 €	---	---	---	---
7	1.6 €	3.6 m³	30.25 €	1.2 €	4.32 €	---	---	---	---
8	1.6 €	3.6 m³	48.25 €	1.68 €	6.03 €	---	---	---	---
9	1.6 €	3.6 m³	66.25 €	2.04 €	7.36 €	---	---	---	---
10	1.6 €	3.6 m³	84.25 €	2.34 €	8.43 €	---	---	---	---