

## Serpa

(Beja)

Tarifário Familiar



Ranking Nacional

224<sup>o</sup>

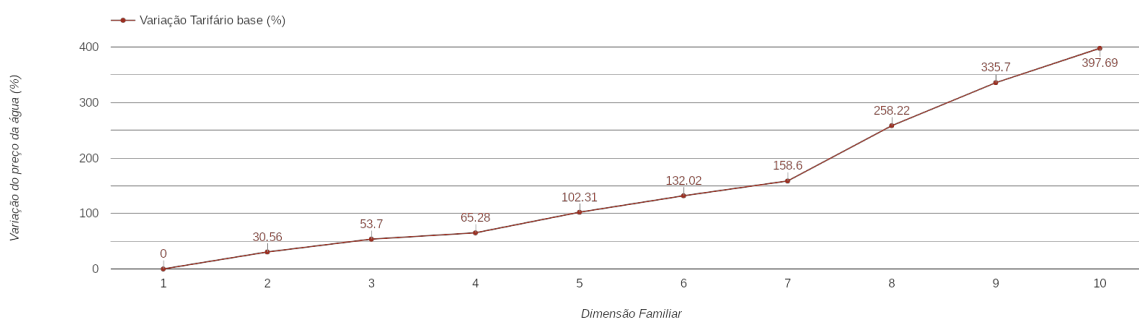
Ranking Distrital

13<sup>o</sup>

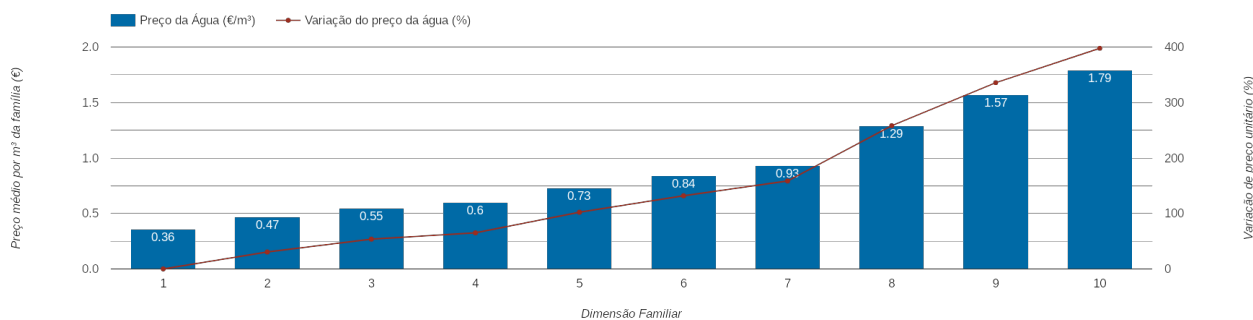
### RANKING DISTRITAL EM FUNÇÃO DO PREÇO TOTAL

Índice Equidade	1 Elemento	2 Elementos	3 Elementos	4 Elementos	5 Elementos	6 Elementos	7 Elementos	8 Elementos	9 Elementos	10 Elementos
-195.35	7 <sup>o</sup>	6 <sup>o</sup>	6 <sup>o</sup>	8 <sup>o</sup>	11 <sup>o</sup>	11 <sup>o</sup>	11 <sup>o</sup>	13 <sup>o</sup>	13 <sup>o</sup>	14 <sup>o</sup>

### PREÇO DA ÁGUA EM FUNÇÃO DA DIMENSÃO FAMILIAR



### PREÇO DA ÁGUA EM FUNÇÃO DA DIMENSÃO FAMILIAR



		TARIFÁRIO BASE (Tarifário Geral) (sem tarifa fixa)				TARIFÁRIO FINAL (Tarifário Geral & Familiar) (sem tarifa fixa)			
Dimensão Familiar	Tarifa Fixa	Consumo per capita	Custo Total	Preço por m <sup>3</sup>	Preço por pessoa	Consumo per capita	Custo Total	Preço por m <sup>3</sup>	Preço por pessoa
1	1.25 €	3.6 m <sup>3</sup>	1.3 €	0.36 €	1.3 €	---	---	---	---
2	1.25 €	3.6 m <sup>3</sup>	3.38 €	0.47 €	1.69 €	---	---	---	---
3	1.25 €	3.6 m <sup>3</sup>	5.98 €	0.55 €	1.99 €	---	---	---	---
4	1.25 €	3.6 m <sup>3</sup>	8.57 €	0.6 €	2.14 €	---	---	---	---
5	1.25 €	3.6 m <sup>3</sup>	13.11 €	0.73 €	2.62 €	---	---	---	---
6	1.25 €	3.6 m <sup>3</sup>	18.04 €	0.84 €	3.01 €	---	---	---	---
7	1.25 €	3.6 m <sup>3</sup>	23.46 €	0.93 €	3.35 €	---	---	---	---
8	1.25 €	3.6 m <sup>3</sup>	37.14 €	1.29 €	4.64 €	---	---	---	---
9	1.25 €	3.6 m <sup>3</sup>	50.82 €	1.57 €	5.65 €	---	---	---	---
10	1.25 €	3.6 m <sup>3</sup>	64.5 €	1.79 €	6.45 €	---	---	---	---