

Santa Marta de Penaguião

(Vila Real)

Tarifário Familiar



Ranking Nacional

301^o

Ranking Distrital

14^o

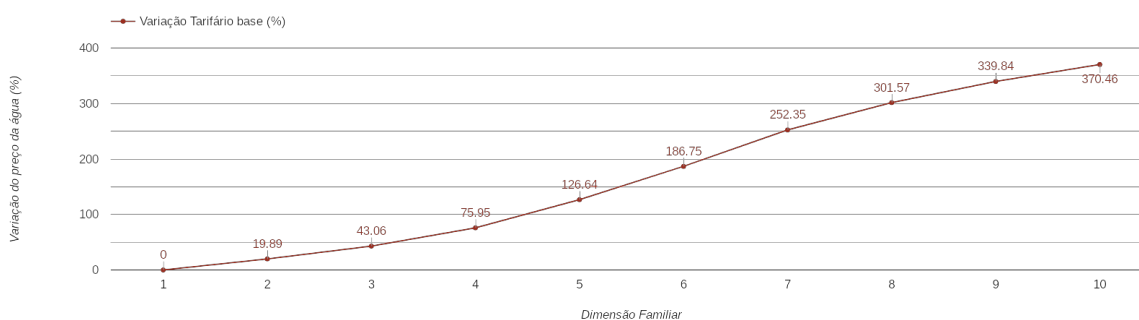
RANKING DISTRITAL EM FUNÇÃO DO PREÇO TOTAL

Índice Equidade	1 Elemento	2 Elementos	3 Elementos	4 Elementos	5 Elementos	6 Elementos	7 Elementos	8 Elementos	9 Elementos	10 Elementos
-398.23	5 ^o	7 ^o	10 ^o	13 ^o	14 ^o	14 ^o	14 ^o	14 ^o	14 ^o	14 ^o

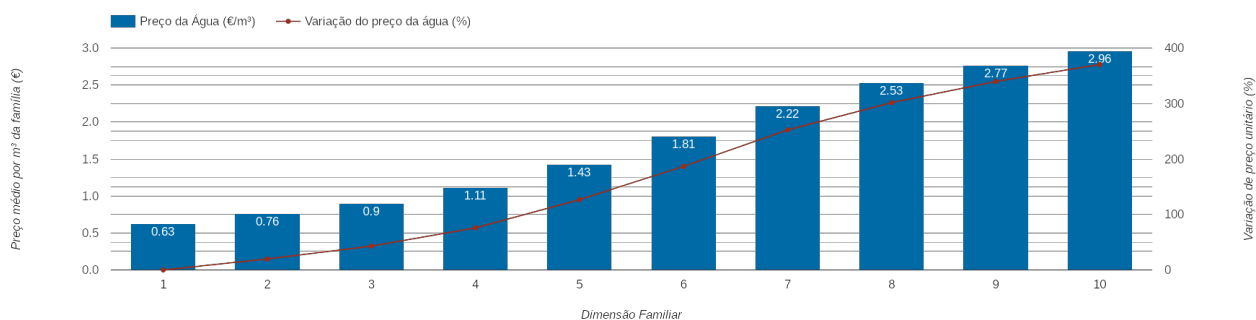
NOTAS TARIFÁRIO:

-

PREÇO DA ÁGUA EM FUNÇÃO DA DIMENSÃO FAMILIAR



PREÇO DA ÁGUA EM FUNÇÃO DA DIMENSÃO FAMILIAR



		TARIFÁRIO BASE (Tarifário Geral) (sem tarifa fixa)				TARIFÁRIO FINAL (Tarifário Geral & Familiar) (sem tarifa fixa)			
Dimensão Familiar	Tarifa Fixa	Consumo per capita	Custo Total	Preço por m ³	Preço por pessoa	Consumo per capita	Custo Total	Preço por m ³	Preço por pessoa
1	1.5 €	3.6 m ³	2.27 €	0.63 €	2.27 €	---	---	---	---
2	1.5 €	3.6 m ³	5.44 €	0.76 €	2.72 €	---	---	---	---
3	1.5 €	3.6 m ³	9.73 €	0.9 €	3.24 €	---	---	---	---
4	1.5 €	3.6 m ³	15.96 €	1.11 €	3.99 €	---	---	---	---
5	1.5 €	3.6 m ³	25.7 €	1.43 €	5.14 €	---	---	---	---
6	1.5 €	3.6 m ³	39.02 €	1.81 €	6.5 €	---	---	---	---
7	1.5 €	3.6 m ³	55.94 €	2.22 €	7.99 €	---	---	---	---
8	1.5 €	3.6 m ³	72.86 €	2.53 €	9.11 €	---	---	---	---
9	1.5 €	3.6 m ³	89.78 €	2.77 €	9.98 €	---	---	---	---
10	1.5 €	3.6 m ³	106.7 €	2.96 €	10.67 €	---	---	---	---