

Serpa

(Beja)

Tarifário Familiar



Ranking Nacional

263^o

Ranking Distrital

14^o

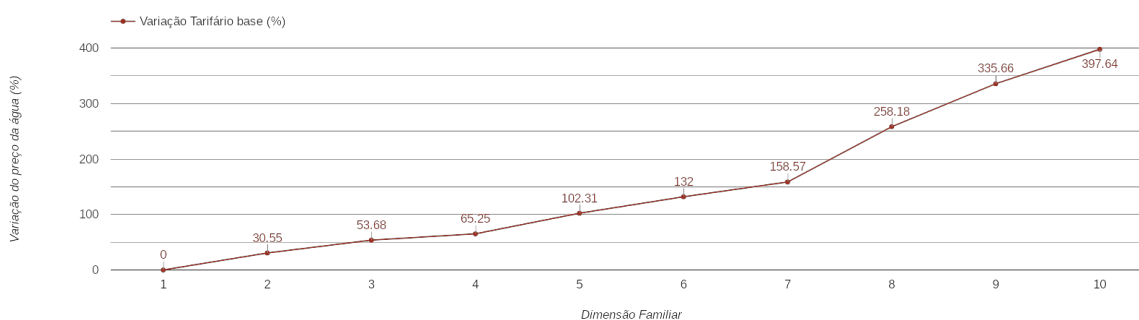
RANKING DISTRITAL EM FUNÇÃO DO PREÇO TOTAL

Índice Equidade	1 Elemento	2 Elementos	3 Elementos	4 Elementos	5 Elementos	6 Elementos	7 Elementos	8 Elementos	9 Elementos	10 Elementos
-228.80	7 ^o	8 ^o	9 ^o	8 ^o	13 ^o	14 ^o	14 ^o	14 ^o	14 ^o	14 ^o

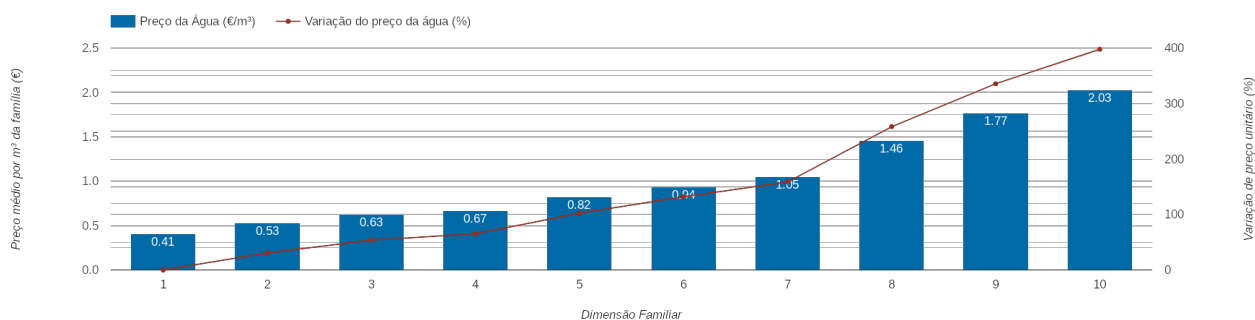
NOTAS TARIFÁRIO:

-

PREÇO DA ÁGUA EM FUNÇÃO DA DIMENSÃO FAMILIAR



PREÇO DA ÁGUA EM FUNÇÃO DA DIMENSÃO FAMILIAR



		TARIFÁRIO BASE (Tarifário Geral) (sem tarifa fixa)				TARIFÁRIO FINAL (Tarifário Geral & Familiar) (sem tarifa fixa)			
Dimensão Familiar	Tarifa Fixa	Consumo per capita	Custo Total	Preço por m ³	Preço por pessoa	Consumo per capita	Custo Total	Preço por m ³	Preço por pessoa
1	1.3 €	3.6 m ³	1.47 €	0.41 €	1.47 €	---	---	---	---
2	1.3 €	3.6 m ³	3.83 €	0.53 €	1.91 €	---	---	---	---
3	1.3 €	3.6 m ³	6.76 €	0.63 €	2.25 €	---	---	---	---
4	1.3 €	3.6 m ³	9.69 €	0.67 €	2.42 €	---	---	---	---
5	1.3 €	3.6 m ³	14.83 €	0.82 €	2.97 €	---	---	---	---
6	1.3 €	3.6 m ³	20.41 €	0.94 €	3.4 €	---	---	---	---
7	1.3 €	3.6 m ³	26.53 €	1.05 €	3.79 €	---	---	---	---
8	1.3 €	3.6 m ³	42 €	1.46 €	5.25 €	---	---	---	---
9	1.3 €	3.6 m ³	57.48 €	1.77 €	6.39 €	---	---	---	---
10	1.3 €	3.6 m ³	72.95 €	2.03 €	7.3 €	---	---	---	---