

Sertã

(Castelo Branco)

Tarifário Familiar



Ranking Nacional

223^o

Ranking Distrital

8^o

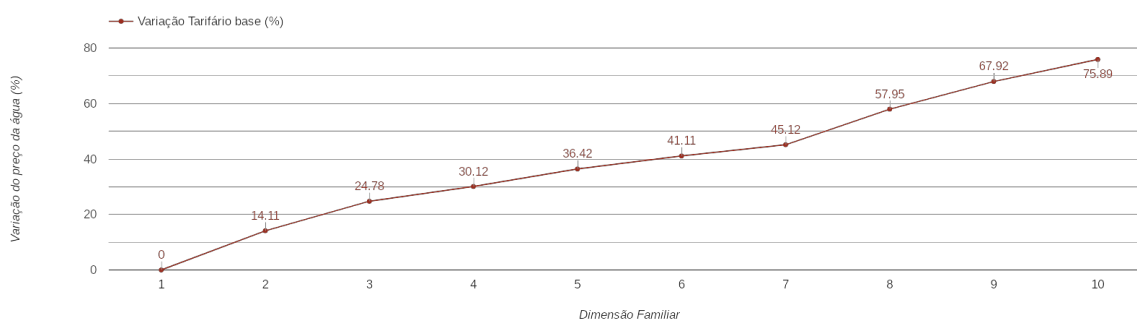
RANKING DISTRITAL EM FUNÇÃO DO PREÇO TOTAL

Índice Equidade	1 Elemento	2 Elementos	3 Elementos	4 Elementos	5 Elementos	6 Elementos	7 Elementos	8 Elementos	9 Elementos	10 Elementos
-191.88	9 ^o	8 ^o	8 ^o	8 ^o	8 ^o	8 ^o	8 ^o	8 ^o	7 ^o	7 ^o

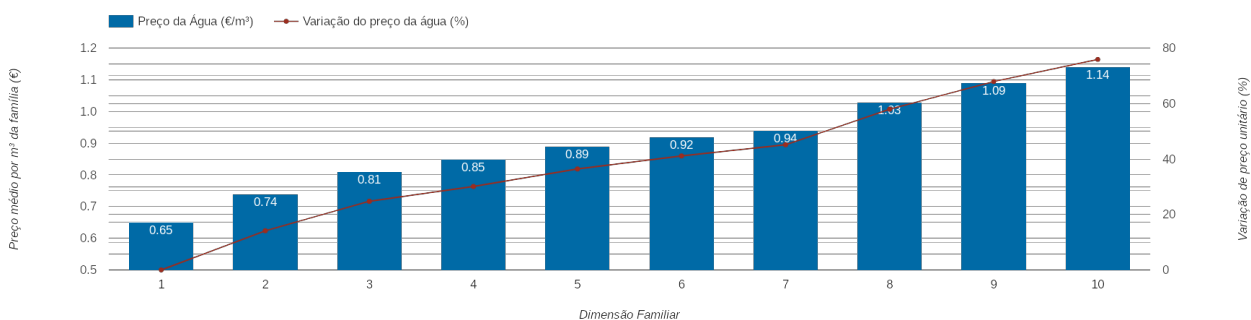
NOTAS TARIFÁRIO:

-

PREÇO DA ÁGUA EM FUNÇÃO DA DIMENSÃO FAMILIAR



PREÇO DA ÁGUA EM FUNÇÃO DA DIMENSÃO FAMILIAR



		TARIFÁRIO BASE (Tarifário Geral) (sem tarifa fixa)				TARIFÁRIO FINAL (Tarifário Geral & Familiar) (sem tarifa fixa)			
Dimensão Familiar	Tarifa Fixa	Consumo per capita	Custo Total	Preço por m ³	Preço por pessoa	Consumo per capita	Custo Total	Preço por m ³	Preço por pessoa
1	3.78 €	3.6 m ³	2.34 €	0.65 €	2.34 €	---	---	---	---
2	3.78 €	3.6 m ³	5.34 €	0.74 €	2.67 €	---	---	---	---
3	3.78 €	3.6 m ³	8.76 €	0.81 €	2.92 €	---	---	---	---
4	3.78 €	3.6 m ³	12.18 €	0.85 €	3.04 €	---	---	---	---
5	3.78 €	3.6 m ³	15.96 €	0.89 €	3.19 €	---	---	---	---
6	3.78 €	3.6 m ³	19.81 €	0.92 €	3.3 €	---	---	---	---
7	3.78 €	3.6 m ³	23.77 €	0.94 €	3.4 €	---	---	---	---
8	3.78 €	3.6 m ³	29.57 €	1.03 €	3.7 €	---	---	---	---
9	3.78 €	3.6 m ³	35.36 €	1.09 €	3.93 €	---	---	---	---
10	3.78 €	3.6 m ³	41.16 €	1.14 €	4.12 €	---	---	---	---