

## Barcelos

(Braga)

Tarifário Familiar



Ranking Nacional

262<sup>o</sup>

Ranking Distrital

12<sup>o</sup>

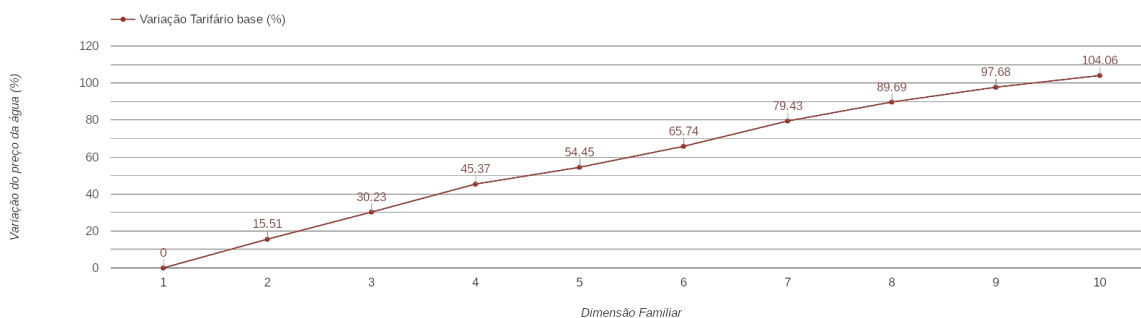
### RANKING DISTRITAL EM FUNÇÃO DO PREÇO TOTAL

Índice Equidade	1 Elemento	2 Elementos	3 Elementos	4 Elementos	5 Elementos	6 Elementos	7 Elementos	8 Elementos	9 Elementos	10 Elementos
-240.54	11 <sup>o</sup>	11 <sup>o</sup>	11 <sup>o</sup>	11 <sup>o</sup>	12 <sup>o</sup>	12 <sup>o</sup>	13 <sup>o</sup>	13 <sup>o</sup>	12 <sup>o</sup>	12 <sup>o</sup>

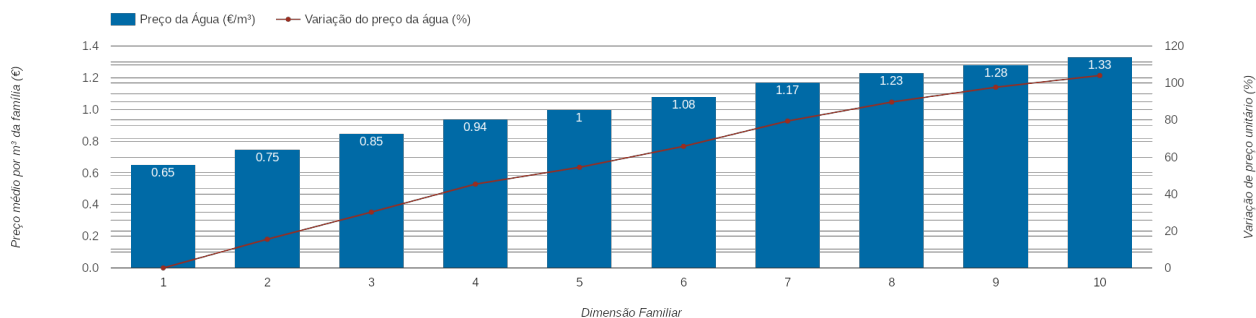
#### NOTAS TARIFÁRIO:

-

### PREÇO DA ÁGUA EM FUNÇÃO DA DIMENSÃO FAMILIAR



### PREÇO DA ÁGUA EM FUNÇÃO DA DIMENSÃO FAMILIAR



		TARIFÁRIO BASE (Tarifário Geral) (sem tarifa fixa)				TARIFÁRIO FINAL (Tarifário Geral & Familiar) (sem tarifa fixa)			
Dimensão Familiar	Tarifa Fixa	Consumo per capita	Custo Total	Preço por m <sup>3</sup>	Preço por pessoa	Consumo per capita	Custo Total	Preço por m <sup>3</sup>	Preço por pessoa
1	5.46 €	3.6 m <sup>3</sup>	2.34 €	0.65 €	2.34 €	---	---	---	---
2	5.46 €	3.6 m <sup>3</sup>	5.41 €	0.75 €	2.7 €	---	---	---	---
3	5.46 €	3.6 m <sup>3</sup>	9.14 €	0.85 €	3.05 €	---	---	---	---
4	5.46 €	3.6 m <sup>3</sup>	13.61 €	0.94 €	3.4 €	---	---	---	---
5	5.46 €	3.6 m <sup>3</sup>	18.07 €	1 €	3.61 €	---	---	---	---
6	5.46 €	3.6 m <sup>3</sup>	23.27 €	1.08 €	3.88 €	---	---	---	---
7	5.46 €	3.6 m <sup>3</sup>	29.39 €	1.17 €	4.2 €	---	---	---	---
8	5.46 €	3.6 m <sup>3</sup>	35.51 €	1.23 €	4.44 €	---	---	---	---
9	5.46 €	3.6 m <sup>3</sup>	41.63 €	1.28 €	4.63 €	---	---	---	---
10	5.46 €	3.6 m <sup>3</sup>	47.75 €	1.33 €	4.78 €	---	---	---	---